

Protein L Mix-N-Go™ ELISA Kits

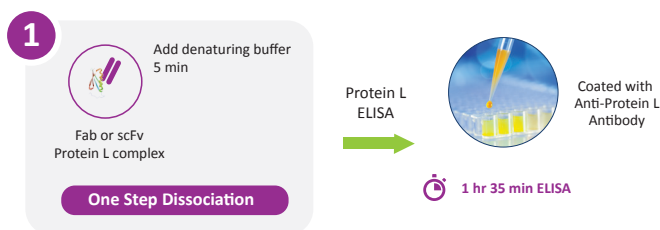
The Gold Standard in Residual Protein L Impurity Analysis

Protein L affinity chromatography is typically used for the capture of antigen-binding domains (Fab), single chain variable fragments (scFv) and single-domain antibodies (sdAb) derived from kappa light chains. Even when covalently attached, Protein L can leach off the chromatography support and co-elute with the antibody fragment. **Cygnus Technologies' Protein L Mix-N-Go™ ELISA kit** enables accurate assessments of protein L impurity remaining in your antibody fragment drug products, which can remain bound to leached Protein L post-purification. The Mix-N-Go kit incorporates a proprietary single-step sample treatment to reduce the complexity of the Protein L assay and time to result, while increasing the robustness compared to traditional Protein L ELISAs.

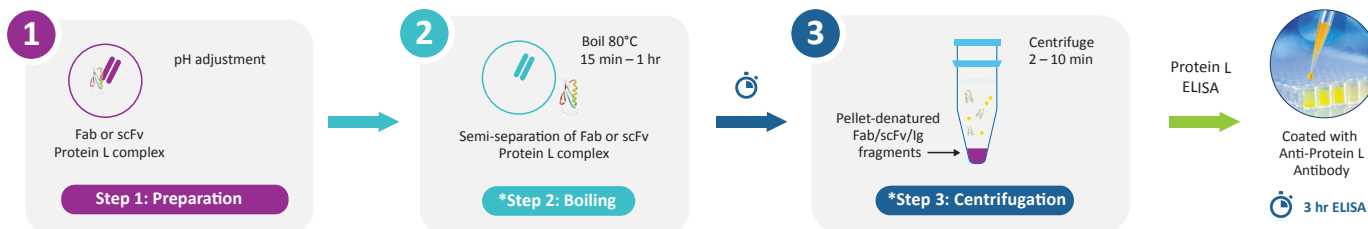
Highlights

- **No boiling** and **centrifugation**—less equipment & calibration
- Robust method—ensures **irreversible** Protein L dissociation from antibody fragment drug products
- Faster time to results—up to **~ 2 hours less** than other kits
- Better **precision**—fewer steps, fewer errors
- No additional reagents or preparation necessary—**pre-made standards** are provided

1-Step Protein L Mix-N-Go™ Sample Treatment and Assay



Traditional Protein L Kit Sample Treatment and Assay



*Typically required for samples that may contain Ig or Ig-fragments.

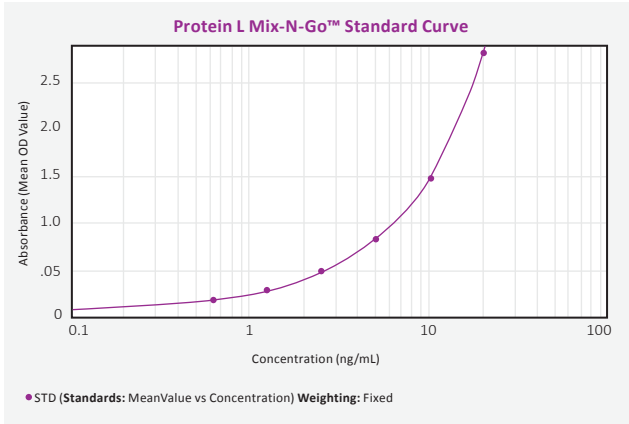
Assay Precision

Intra- and inter-assay precision was assessed on 4 pools with known concentrations.

| Pool | Intra-assay CV n=20 replicates | Inter-assay CV (10 assays) |
|-------------------------|-----------------------------------|-------------------------------|
| Low (~0.7 ng/mL) | 6.5% | 8.0% |
| Low-medium (~2.0 ng/mL) | 7.1% | 7.9% |
| Medium (~7.5 ng/mL) | 7.3% | 6.1% |
| High (~15 ng/mL) | 5.4% | 6.5% |

Standard Curve

Typical standard curve data from an actual assay run using a 4-parameter fit is shown.



Simplified Assay Workflow

| | Cygnus Technologies Protein L Mix-N-Go™ ELISA Kit | Competitor K, M |
|---|--|-------------------------------------|
| Sample Prep: | | |
| Irreversible Dissociation of Protein L and scFv/Fab | Yes | No |
| Boiling required | No | Yes |
| Centrifugation step required | No | Yes |
| Total sample prep. time | 10 minutes | 45 minutes |
| Assay Prep: | | |
| Reagent Preparation | All reagents ready to use | Prepare Calibrators |
| Calibrator prep. time | None | Make standard dilutions ~10 minutes |
| Format | Simultaneous | Sequential |
| Number of wash steps | 1 | 2 |
| Total time to result | 1 hour 45 minutes | 3 hours 40 minutes |

Protein L Mix-N-Go™ ELISA Kit Details

Item Number: F1065

Storage: All kit reagents 2°C to 8°C

Assay format: 96 Well Plate

Time to result: ~1 hr 45 min

LOD: ~0.08 ng/mL

LLOQ: ~0.63 ng/mL

Recommended Diluent: G028



Scan for more information

cygnustechnologies.com